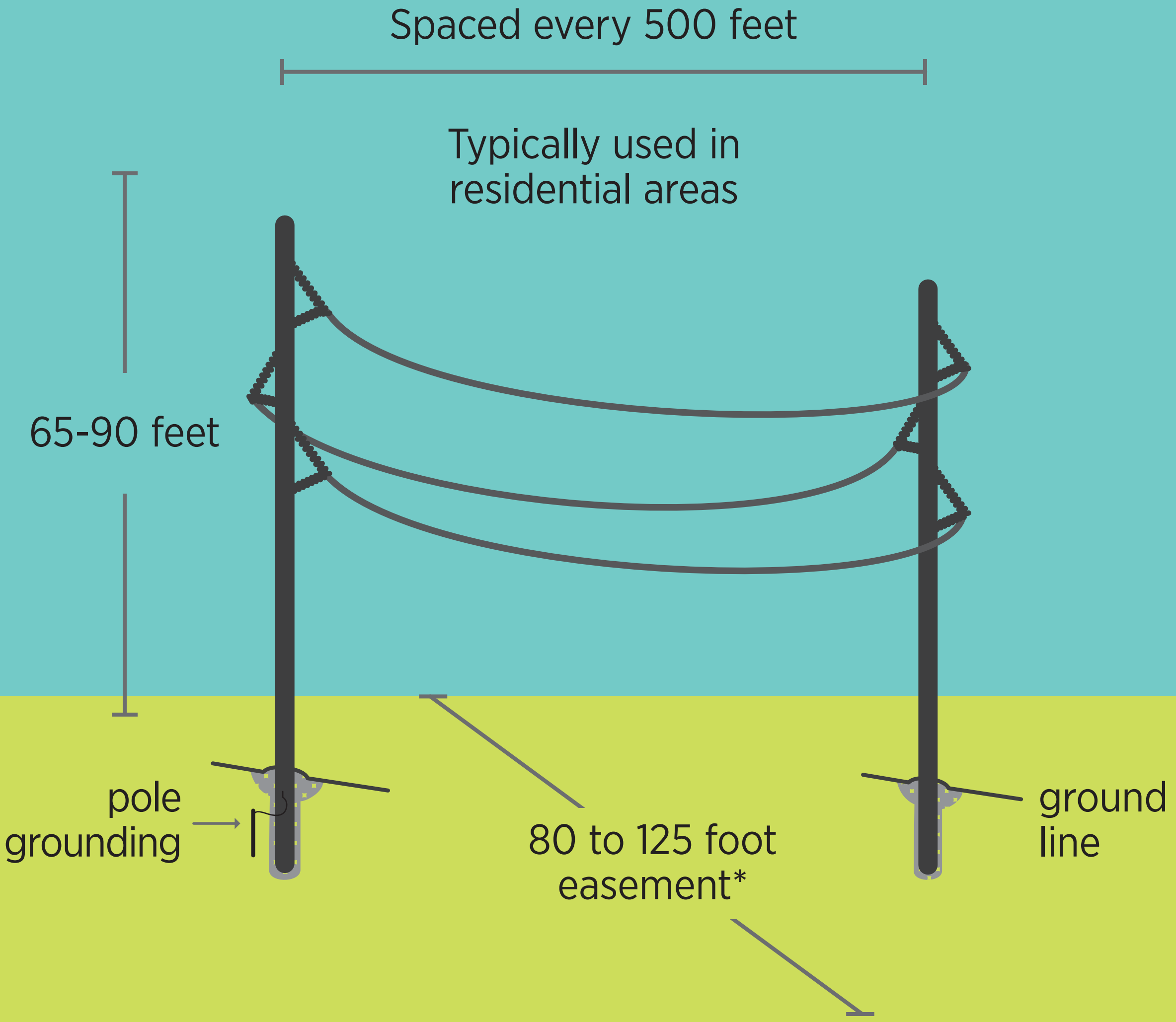
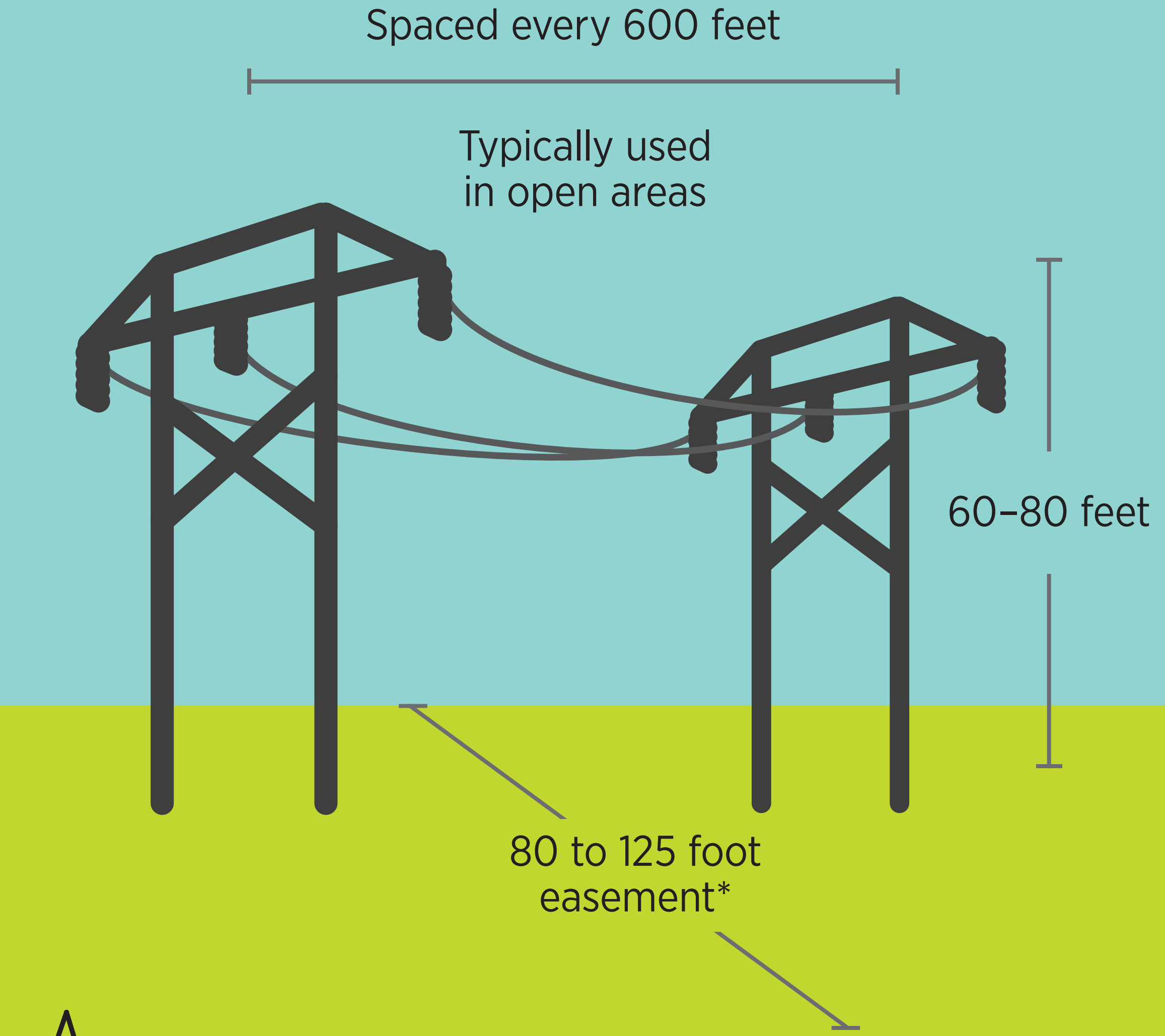


# The Reliability Upgrade will utilize either steel or wooden H-frame poles comprised of a single circuit of three overhead cables

## STEEL POLES



## WOODEN H-FRAME POLES



\*Our poles and overhead wires will typically be set in the center of the 80 to 125 foot easement. The easement will be wider in some areas, for example the Bureau of Land Management land, and select areas may have a narrower easement.