



Original Sheet No. 1

Wyo. P.S.C. No. 12

SCHEDULE OF RATES
FOR NATURAL GAS SERVICE
AVAILABLE
IN THE ENTIRE TERRITORY SERVED
BY
BLACK HILLS WYOMING GAS, LLC
D/B/A BLACK HILLS ENERGY
F/K/A CHEYENNE LIGHT, FUEL AND POWER COMPANY

Communications Concerning Tariffs Should Be
Addressed to:

Regulatory
Black Hills Wyoming Gas, LLC
1301 W. 24th Street
Cheyenne, WY 82001
(605) 721-2348



Table of Contents

Original Sheet No. 2

TABLE OF CONTENTS

	<u>Sheet No.</u>
Title Page	1
Table of Contents.....	2
General Statement Regarding Rate Availability.....	4
 <u>Natural Gas Rates</u>	
Rate Schedule Summation Sheet.....	5
Schedule of Charges for Rendering Service and Construction Allowances.....	5C
Residential Service Schedule RG	10
Commercial Service Schedule CG	15
Interruptible Service Schedule IG	20
Special Contract Service..... Schedule SCS-1	25
Special Contract Service..... Schedule SCS-2	26
Special Contract Service Schedule SCS-3	27
Firm Gas Transportation Service Schedule TF	29
Interruptible Gas Transportation Service Schedule TI.....	30
Compressed Natural Gas Service Schedule CNG.....	31
Natural Gas Vehicle Service Schedule NGV	32
Schedule of Dekatherm Conversion Factors	35
Gas Cost (Reconciled).....	37
Franchise Fee Surcharges.....	38
Demand Side Management	39
 <u>Rules and Regulations</u>	
Index	R1
General Statement.....	R5
General Service	R6
Residential Service	R27
Commercial Service	R28
Interruptible Industrial Service.....	R29
Gas Transportation Service	R31
Standards for Service.....	R68
Service Connection and Main Extension Policy.....	R77
Excess Flow Valve Program	R88
Appendix A – Black Hills Energy Natural Gas Metering Testing Program	R90



Black Hills Wyoming Gas, LLC d/b/a Black Hills Energy
f/k/a Cheyenne Light, Fuel and Power Company

Wyo. P.S.C. Tariff No. 1

Original Sheet No. 3

RESERVED FOR FUTURE FILING



General Statement

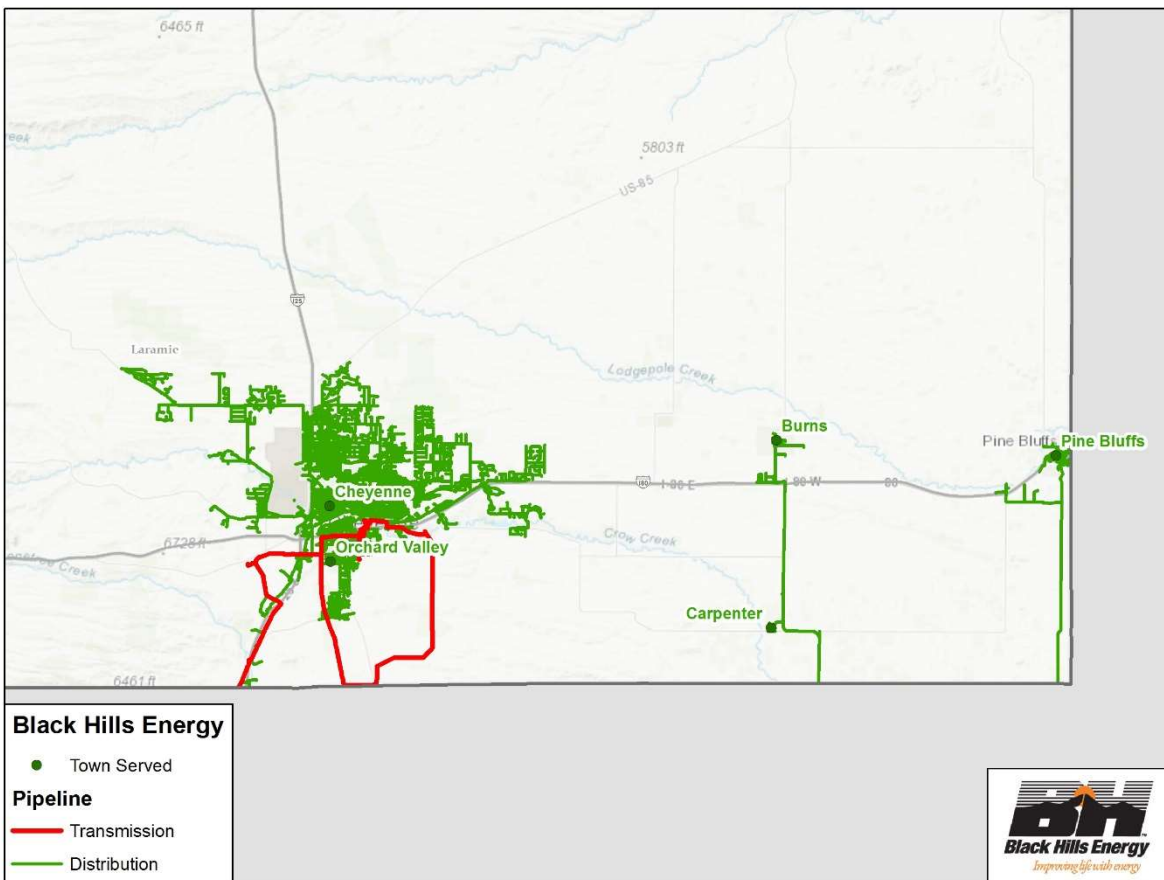
Original Sheet No. 4

GENERAL STATEMENT REGARDING RATE AVAILABILITY

Rates for service are available within all territory supplied with natural gas service by the Company unless otherwise provided in the individual rate schedule.

For an index of rate schedules and rate sheet numbers see the Table of Contents, Sheet No. 2.

The territory served by the Company is the City of Cheyenne, the towns of Burns, Carpenter, and Pine Bluffs, and the Fringe and Rural areas adjacent thereto.





Rate Schedule Summation Sheet

Second Revised Sheet No. 5
Cancels First Revised Sheet No. 5

**NATURAL GAS RATES
RATE SCHEDULE SUMMATION SHEET**

Rate Schedule	Sheet No.	Type of Charge	Billing Units	Base Rate	Projected Gas Cost	Deferred Gas Cost	Gas Cost (Reconciled)	DSM Surcharge	Total Rate
RG	10	<u>Residential Service</u> Rate ID WY001 Service and Facility Distribution	Month Dth	\$17.70 \$2.2387	\$2.6506	\$0.2583	\$2.9089	\$0.2204	\$17.70 \$5.3680
CG	15	<u>Commercial Service</u> Rate ID WY051 & WY052 Service and Facility Distribution	Month Dth	\$27.00 \$1.8367	\$2.6506	\$0.2583	\$2.9089	\$0.0179	\$27.00 \$4.7635
IG	20	<u>Interruptible Service</u> Rate ID WY501 Service and Facility Distribution Unauthorized Overrun	Month Dth Dth	\$219.00 \$0.7733 \$25.00	\$2.6506	\$0.2583	\$2.9089	\$0.0179	\$219.00 \$3.7001 \$25.00
SCS-1	25	<u>Interruptible Service</u> Rate ID WY501 Service and Facility Backup Supply Distribution Unauthorized Overrun <u>Transportation</u> <u>Service</u> System	Month Dth Dth	\$5,290.00 \$0.3820 \$25.00 (1)	\$2.6506	\$0.2583	\$2.9089 ---	--- ---	\$5,290.00 \$3.2909 \$25.00 (1)
SCS-2	26	<u>Interruptible Service</u> Rate ID WY502 Service and Facility Supply Distribution Unauthorized Overrun <u>Transportation</u> <u>Service</u> System	Month Dth Dth	\$1,550.00 \$0.3820 \$25.00 (1)	\$2.6506	\$0.2583	\$2.9089 ---	--- ---	\$1,550.00 \$3.2909 \$25.00 (1)
SCS-3	27	Frim Service Facility and O&M Distribution	Month Dth	(1) (1)			-- --		(1) (1)

Note (1): Individual rates are negotiated between Company and Customer.



Rate Schedule Summation Sheet

Second Revised Sheet No. 5A
Cancels First Revised Sheet No. 5A

NATURAL GAS RATES
RATE SCHEDULE SUMMATION SHEET - CONTINUED

Rate Schedule	Sheet No.	Type of Charge	Billing Units	Base Rate	Projected Gas Cost	Deferred Gas Cost	Gas Cost (Reconciled)	Total Rate
TF	29	<u>Firm Transportation Service</u>						
		Rate ID WY551						
		First Firm Meter	---	\$120.00			--	\$120.00
		Additional Meters	---	\$120.00			--	\$120.00
		Reservation Charge	Dth	\$3.27			--	\$3.27
		Distribution:						
		Standard	Dth	\$0.5730			--	\$0.5730
		Minimum	Dth	\$0.3820			--	\$0.3820
		Authorized Overrun	Dth	\$0.5730			--	\$0.5730
		Unauthorized Overrun						
		Transportation:						
		Standard	Dth	\$25.00			--	\$25.00
		Minimum	Dth	\$0.5730			--	\$0.5730
		Firm Supply Reservation	Dth	\$0.0000	\$ 3.1085		\$ 3.1085	\$3.1085
		Backup Supply	Dth	\$0.3820	\$ 2.6506	\$0.2583	\$2.9089	\$ 3.2909
		Authorized Overrun	Dth	\$0.3820	\$ 2.6506	\$0.2583	\$ 2.9089	\$ 3.2909
		Unauthorized Overrun Penalty						
		Sales:						
		Standard	Dth	\$25.00			--	\$25.00
		Minimum	Dth	\$2.50			--	\$2.50
TI	30	<u>Interruptible Transportation Service</u>						
		Rate ID WY552						
		First Interruptible Meter	---	\$280.00			--	\$280.00
		Additional Meters	---	\$280.00			--	\$280.00
		Distribution:						
		Standard	Dth	\$0.5730			--	\$0.5730
		Minimum	Dth	\$0.3820			--	\$0.3820
		Authorized Overrun						
		Transportation	Dth	\$0.5730			--	\$0.5730
		Unauthorized Overrun						
		Transportation:						
		Standard	Dth	\$25.00			--	\$25.00
		Minimum	Dth	\$0.5730			--	\$0.5730
		On-Peak Demand	Dth	\$4.6800	\$ 3.2251		\$3.2251	\$ 7.9051
		Backup Supply	Dth	\$0.3820	\$ 2.6506	\$0.2583	\$ 2.9089	\$ 3.2909
		Unauthorized Overrun Penalty						
		Sales:						
		Standard	Dth	\$25.00			--	\$25.00
		Minimum	Dth	\$2.50			--	\$2.50



Rate Schedule Summation Sheet

Second Revised Sheet No. 5B
Cancels First Revised Sheet No. 5B

**NATURAL GAS RATES
RATE SCHEDULE SUMMATION SHEET - CONTINUED
COMPRESSED NATURAL GAS AND NATURAL GAS VEHICLE SERVICE**

Rate Schedule	Sheet No.	Type of Charge	Billing Units	Base Rate	Projected Gas Cost	Deferred Gas Cost	Gas Cost (Reconciled)	Total Rate
CNG	31	Distribution	(1) Dth	\$5.9778	\$ 2.6506	\$0.2583	\$ 2.9089	\$8.8867
NGV	32	Facility Charge	(2)					
		5 Year Equipment	"GAC"	\$0.02072			---	\$0.02072
		10 Year Equipment	"GAC"	\$0.01279			---	\$0.01279
		15 Year Equipment	"GAC"	\$0.01014			---	\$0.01014
		20 Year Equipment	"GAC"	\$0.00882			---	\$0.00882
		30 Year Equipment	"GAC"	\$0.00750			---	\$0.00750
		Service Charge	(3)					
		Option A	Month	\$16.00			---	\$16.00
		Option B	Month	(4)			---	(4)

Note 1. The Compressed Natural Gas Service (CNG) rate may also be expressed in \$ per Equivalent Gallon at the public fueling station using a conversion factor based on 0.114 Dth per Equivalent Gallon.

Note 2. The Facility Charge portion of the Natural Gas Vehicle (NGV) rate is based on the Group Average Capital Cost ("GAC") for each type of property, times the appropriate Group Average Capital Cost rate.

Note 3. The Service Charge portion of the NGV rate is based on the specific NGV facilities. The Service Charge for equipment with a Group Average Capital Cost of \$5,000.00 or more will be separately calculated and specified in the National Gas Vehicle Service agreement.

Note 4. Customers electing service under Fueling Option B pay actual cost at the time the charges are incurred.



Rate Schedule Summation Sheet

Original Sheet No. 5C

NATURAL GAS RATES
RATE SCHEDULE SUMMATION SHEET - CONTINUED

SCHEDULE OF CHARGES FOR RENDERING SERVICE AND CONSTRUCTION ALLOWANCES

Sheet No.	Type	Unit	Rate
R26	Customer Service Charge		\$15.00
R17	Reconnection Charge		\$23.00
R26	Non-Gratuitous Labor		\$35.00
R26	Non-Gratuitous Labor – Outside Normal Hours	2 hrs. min	\$119.00
	After 2 hours		Current Rate
	More than 2 calls in 2 hours – Prorated	w/ Min of (per customer)	\$35.00
R26	Returned Check Charge		\$30.00
R26	Late Payment Charge	Balance of Bill	1.5%
R40	Unauthorized Overrun Gas Charge	Per Dth	\$25.00
R47	Interruptible and Transport Customer-Phone Charges for Reading Recorders		Actual Costs
R88	Excess Flow Valve – Installation		\$31.00
R82-R83	Construction Allowance		
R82	Permanent Residential Gas Service		\$2,000
R82	Permanent Commercial Gas Service	Est. annual revenue from the Applicant	1.5x
R82	Permanent Interruptible Industrial Service	Est. annual revenue from the Applicant	1.5x
R83	Permanent Gas Transportation Service	Est. annual revenue from the Applicant	1.5x
R83	Indeterminate Service	Est. Construction Costs	130%
Various	Commission's Authorized Interest Rate	As authorized, by Commission Rule Chapter 1, Section 2(a)(xv)	
R8	Customer Deposit	Unless otherwise ordered by the Commission, the required deposit shall not exceed the total amount of the Customer's estimated bill for three months of highest use based on the premises' monthly bills during the immediate previous 12-month period.	

List of Legal Holidays

New Year's Day	January 1
Memorial Day	Last Monday in May
Independence Day	July 4
Labor Day	First Monday in September
Thanksgiving Day	Fourth Thursday in November
Friday after Thanksgiving	Friday Following Thanksgiving
Christmas Day	December 25

If a holiday falls on a weekend, the day of observance will be the closest work day to the holiday

Upon declaration of the governor of this state, any date appointed or declared by the President of the United States as an occasion of national mourning, rejoicing or observance of national emergency



Rate Schedule Summation Sheet

Original Sheet No. 5D

NATURAL GAS RATES
RATE SCHEDULE SUMMATION SHEET - CONTINUED

PAYMENT

Net monthly bills for these service charges are due and payable twenty days from the date of the bill, and after that date the account becomes delinquent. A late payment charge of 1.5% on the undisputed unpaid balance shall apply to delinquent accounts.

FRANCHISE FEE SURCHARGE

The monthly charge for natural gas service as determined from the Company's applicable gas rate schedules, including the Gas Cost (Reconciled), General Rate Schedule Adjustments, and any other applicable adjustments, shall be increased to each customer receiving service within a municipality wherein the Company pays franchise fees, by the appropriate percentage as set forth in the franchise agreement between the Company and the municipality, less any franchise fees included in Company's gas rates.

DEMAND SIDE MANAGEMENT

The monthly charge for natural gas service as determined from the Company's applicable gas rate schedules, including the Gas Cost (Reconciled), General Rate Schedule Adjustments, and any other applicable adjustments, shall be increased to each customer receiving service for which the Demand Side Management Surcharge applies, except as outline in specific Gas Rate Sheets.



Black Hills Wyoming Gas, LLC d/b/a Black Hills Energy
f/k/a Cheyenne Light, Fuel and Power Company

Wyo. P.S.C. Tariff No. 1

Original Sheet No. 6-9

RESERVED FOR FUTURE FILING



**Residential Service
Rate Schedule RG**

Rate ID WY001
Original Sheet No. 10

**NATURAL GAS RATES
RESIDENTIAL SERVICE
SCHEDULE RG**

APPLICABILITY

Applicable within all territory served by Residential service. Not applicable to resale service.

MONTHLY RATE

Service and Facility Charge, per Month.....	\$17.70
Distribution Charge, all gas used, per Dth	\$2.2387

COST ADJUSTMENT AND RATE SCHEDULE SUMMATION SHEET

This rate schedule is subject to the Gas Cost (Reconciled) commencing on Sheet No. 37. The total monthly rate is shown on the Rate Schedule Summation Sheet, Sheet No. 5.

PAYMENT

Net monthly bills are due and payable twenty days from the date of the bill, and after that date the account becomes delinquent. A late payment charge of 1.5% on the undisputed unpaid balance shall apply to delinquent accounts.

RULES AND REGULATIONS

Service supplied under this schedule is subject to the terms and conditions set forth in the Company's Rules and Regulations on file with the Public Service Commission of Wyoming.



Black Hills Wyoming Gas, LLC d/b/a Black Hills Energy
f/k/a Cheyenne Light, Fuel and Power Company

Wyo. P.S.C. Tariff No. 1

Original Sheet No. 11-14

RESERVED FOR FUTURE FILING



**Commercial Service
Schedule CG**

Rate ID WY 051 & WY052
Original Sheet No. 15

**NATURAL GAS RATES
COMMERCIAL SERVICE
SCHEDULE CG**

APPLICABILITY

Applicable within all territory served to Commercial service. Not applicable to standby, auxiliary or resale service.

MONTHLY RATE

Service and Facility Charge, per Month.....	\$ 27.00
Distribution Charge, all gas used, per Dth	\$1.8367

COST ADJUSTMENT AND RATE SCHEDULE SUMMATION SHEET

This rate schedule is subject to the Gas Cost (Reconciled) commencing on Sheet No. 37. The total monthly rate is shown on the Rate Schedule Summation Sheet, Sheet No. 5.

PAYMENT

Net monthly bills are due and payable twenty days from the date of the bill, and after that date the account becomes delinquent. A late payment charge of 1.5% on the undisputed unpaid balance shall apply to delinquent accounts.

RULES AND REGULATIONS

Service supplied under this schedule is subject to the terms and conditions set forth in the Company's Rules and Regulations on file with the Public Service Commission of Wyoming and the following special conditions:

1. Customer may be required to install an adequate pulsation chamber ahead of a gas engine.
2. For service to gas engine driven irrigation pumps the point of delivery and location of meter shall be determined by the Company. Excepting in unusual situations, such point and meter location shall be at the customer's property line nearest the Company's source of natural gas. All piping beyond point of delivery shall be installed, owned and maintained by Customer.



Black Hills Wyoming Gas, LLC d/b/a Black Hills Energy
f/k/a Cheyenne Light, Fuel and Power Company

Wyo. P.S.C. Tariff No. 1

Original Sheet No. 16-19

RESERVED FOR FUTURE FILING



**Interruptible Service
Rate Schedule IG**

Rate ID WY200 & WY201
Original Sheet No. 20

**NATURAL GAS RATES
INTERRUPTIBLE SERVICE
SCHEDULE IG**

APPLICABILITY

Applicable within all territory served to Interruptible Service where Company has available a supply of gas in excess of that required for service under higher priority rates provided that customer has complied with the standby requirements of the rate as set forth in the Rules and Regulations hereof. Not applicable to standby, auxiliary or resale service.

MONTHLY RATE

Service and Facility Charge, per Month	\$219.00
Distribution Charge, all gas used, per Dth.....	\$0.7733

COST ADJUSTMENT AND RATE SCHEDULE SUMMATION SHEET

This rate schedule is subject to the Gas Cost (Reconciled) commencing on Sheet No. 37. The total monthly rate is shown on the Rate Schedule Summation Sheet, Sheet No. 5.

UNAUTHORIZED OVERRUN GAS

If, on any day when the curtailment of gas usage has been ordered by Company, customer fails or refuses to curtail or shut off the use of interruptible gas when and as directed by Company, then all gas used during the period beginning at the time when customer is directed by Company to discontinue or curtail use of gas and ending at the time when customer is authorized by Company to resume full use of gas, shall constitute Unauthorized Overrun Gas. Customer shall pay \$25.00 per Dth for all such Unauthorized Overrun Gas in addition to the Distribution Charge.



**Interruptible Service
Rate Schedule IG**

Rate ID WY200 & WY201
Original Sheet No. 20A

**NATURAL GAS RATES
INTERRUPTIBLE SERVICE
SCHEDULE IG - CONTINUED**

PAYMENT

Net monthly bills are due and payable twenty days from the date of the bill, and after that date the account becomes delinquent. A late payment charge of 1.5% on the undisputed unpaid balance shall apply to delinquent accounts.

RULES AND REGULATIONS

Service supplied under this schedule is subject to the terms and conditions set forth in Company's Rules and Regulations on file with the Public Service Commission of Wyoming and the following special conditions:

1. In consideration of this special rate for Interruptible Gas service all use of gas under this schedule is interruptible and is subject to immediate discontinuance of gas service to customer by Company without notice. Company, whenever circumstances permit, will endeavor to give customer advance notice of interruption or discontinuance of gas service by telephone or otherwise and customer shall immediately discontinue the use of gas when and as directed by Company. Authorized representatives of Company shall have at all times the right of ingress and egress to customer's premises for purposes of ensuring the Rules and Regulations applicable to this service in this tariff are maintained. Upon determination by Company that the necessity for interruption or discontinuance has ceased gas service may be resumed.

All gas service to customer under this schedule will be interrupted or discontinued in order to prevent a shortage of gas service for the use of customers supplied on higher priority schedules or in order to prevent a charge by Company's supplier for Unauthorized Overrun gas or an increase in the Demand Charge to Company under Company's gas purchase contract.



**Interruptible Service
Rate Schedule IG**

Rate ID WY200 & WY201
Original Sheet No. 20B

**NATURAL GAS RATES
INTERRUPTIBLE SERVICE
SCHEDULE IG - CONTINUED**

RULES AND REGULATIONS - CONTINUED

2. Residential and Commercial Gas services have priority to the use of gas service over all Interruptible Gas services.
3. The interruption of gas deliveries in whole or in part under this schedule shall not be the basis for claims for damages sustained by customer.
4. Any customer requesting service under this schedule shall make provision for interruptions of service as follows:

Customer shall (1) install and maintain auxiliary equipment capable of supplying the total heat requirements normally supplied by the gas burning equipment served under this schedule; (2) maintain a supply of alternate fuel adequate for customer's requirement; and (3) have qualified personnel employed and available to operate any necessary fuel burning equipment.
5. All gas service supplied hereunder is interruptible and subject to discontinuance by Company. In the event that customer is unable to provide complete and adequate standby for any portion of customer's gas burning equipment, customer shall so arrange the gas piping to such equipment not provided with standby so that gas to such equipment can be separately metered and gas service to such equipment shall be supplied only under the appropriate Commercial schedule.
6. Customer may be required to install an adequate pulsation chamber ahead of a gas engine.
7. For service to gas engine driven irrigation pumps the point of delivery and location of meter shall be determined by the Company. Excepting in unusual situations, such point and meter location shall be at the customer's property line nearest the Company's source of natural gas. All piping beyond point of delivery shall be installed, owned and maintained by customer.
8. Customer agrees to provide and maintain, at no cost to the Company, an acceptable telephone service available at the customer's meter location.



Black Hills Wyoming Gas, LLC d/b/a Black Hills Energy
f/k/a Cheyenne Light, Fuel and Power Company

Wyo. P.S.C. Tariff No. 1

Original Sheet No. 21-24

RESERVED FOR FUTURE FILING



Special Contract Service
Schedule SC-1

Rate ID WY501
Original Sheet No. 25

**NATURAL GAS RATES
SPECIAL CONTRACT SERVICE
SCHEDULE SCS-1**

APPLICABILITY

Applicable to Frontier Oil and Refining Company at Cheyenne, Wyoming, for interruptible industrial natural gas service and natural gas transportation service as set forth in the agreement between Company and Customer.

MONTHLY RATE

- 1. Interruptible Service
Service and Facility Charge
per Month.....\$5,290.00
Distribution Charge
All gas used, per Dth \$0.382
- 2. Transportation Service
System Charge
per Month (1)

ANNUAL MINIMUM

The minimum charge per year for Interruptible Service and Transportation Service shall be (1)
plus any applicable Gas Cost (Reconciled) charges.

COST ADJUSTMENT AND RATE SCHEDULE SUMMATION SHEET

This rate schedule is subject to the Gas Cost (Reconciled) commencing on Sheet No. 37. The total monthly rate is shown on the Rate Schedule Summation Sheet, Sheet No. 5.

Note (1): Individual rates are negotiated between Company and Customer.



**Special Contract Service
Schedule SC-1**

Rate ID WY501
Original Sheet No. 25A

**NATURAL GAS RATES
SPECIAL CONTRACT SERVICE
SCHEDULE SCS-1 - CONTINUED**

UNAUTHORIZED OVERRUN GAS

If, on any day when the curtailment of gas usage has been ordered by Company, Customer fails or refuses to curtail or shut off the use of interruptible or transported gas when and as directed by Company, then all gas used during the period beginning one hour after the time when Customer is directed by Company to discontinue or curtail use of gas and ending at the time when Customer is authorized by Company to resume full use of gas, shall constitute Unauthorized Overrun Gas. Customer shall pay \$25.00 per Dth for all such Unauthorized Overrun Gas in addition to the Distribution Charge.

DEMAND SIDE MANAGEMENT

Demand Side Management (DSM) Surcharge shall not be applicable to Schedule SCS-1 Customer.

PAYMENT

Net monthly bills are due and payable twenty days from the date of the bill, and after that date the account becomes delinquent. A late payment charge of 1.5% on the undisputed unpaid balance shall apply to delinquent accounts.

RULES AND REGULATIONS

Service supplied under this schedule is subject to the Rules and Orders of the Public Service Commission of Wyoming and to the conditions of the contracts for such service between Company and Customer not in conflict herewith.



Special Contract Service
Rate Schedule SCS-2

Rate ID WY502
Original Sheet No. 26

**NATURAL GAS RATES
SPECIAL CONTRACT SERVICE
SCHEDULE SCS-2**

APPLICABILITY

Applicable to Dyno Nobel, Inc. and their successors and assigns at Cheyenne, Wyoming, for interruptible industrial natural gas service and natural gas transportation service as set forth in the agreement between Company and Customer.

MONTHLY RATE

1.	<u>Interruptible Service</u>	
	<u>Service and Facility Charge</u>	
	per Month.....	\$1,550.00
	Distribution Charge	
	All gas used, per Dth	\$0.382
2.	<u>Transportation Service</u>	
	<u>System Charge</u>	
	per Month	(1)

ANNUAL MINIMUM

The minimum charge per year for Interruptible Service and Transportation Service shall be (1)
plus any applicable Gas Cost (Reconciled) charges.

COST ADJUSTMENT AND RATE SCHEDULE SUMMATION SHEET

This rate schedule is subject to the Gas Cost (Reconciled) commencing on Sheet No. 37. The total monthly rate is shown on the Rate Schedule Summation Sheet, Sheet No. 5.

Note (1): Individual rates are negotiated between Company and Customer.



**Special Contract Service
Rate Schedule SCS-2**

Rate ID WY502
Original Sheet No. 26A

**NATURAL GAS RATES
SPECIAL CONTRACT SERVICE
SCHEDULE SCS-2 – CONTINUED**

UNAUTHORIZED OVERRUN GAS

If, on any day when the curtailment of gas usage has been ordered by Company, customer fails or refuses to curtail or shut off the use of interruptible or transported gas when and as directed by Company, then all gas used during the period beginning one hour after the time when customer is directed by Company to discontinue or curtail use of gas and ending at the time when customer is authorized by Company to resume full use of gas, shall constitute Unauthorized Overrun Gas. Customer shall pay \$25.00 per Dth for all such Unauthorized Overrun Gas in addition to the Distribution Charge.

DEMAND SIDE MANAGEMENT

Demand Side Management (DSM) Surcharge shall not be applicable to Schedule SCS-2 Customer.

PAYMENT

Net monthly bills are due and payable twenty days from the date of the bill, and after that date the account becomes delinquent. A late payment charge of 1.5% on the undisputed unpaid balance shall apply to delinquent accounts.

RULES AND REGULATIONS

Service supplied under this schedule is subject to the Rules and Orders of the Public Service Commission of Wyoming and to the conditions of the contract for such service between Company and Customer not in conflict herewith.



NATURAL GAS RATES
SPECIAL CONTRACT SERVICE
SCHEDULE SCS-3

APPLICABILITY

Applicable to Microsoft Corporation and their successors and assigns at Cheyenne, Wyoming, for firm natural gas service as set forth in the agreement between the Company and the Customer.

MONTHLY RATE

Firm Service

- 1. Facility and O&M Charge
Per Month..... (1)
- 2. Distribution Charge
All gas used, per Dth (1)
- 3. Gas Commodity and Upstream Transportation & Storage Cost Charge
All gas used (1)

ANNUAL MINIMUM

The minimum charge per year for service shall be. (1)

NATURAL GAS COMMODITY AND UPSTREAM TRANSPORTATION & STORAGE COSTS

The Customer will not participate in the Company's Gas Cost Reconciled tariff. The Customer is responsible for the payment of any and all natural gas commodity and upstream transportation related costs for natural gas nominated and scheduled for and consumed by the Customer.

Note (1): Individual rates are negotiated between the Company and the Customer.



NATURAL GAS RATES

SPECIAL CONTRACT SERVICE

SCHEDULE SCS-3

DEMAND SIDE MANAGEMENT

Demand Side Management (DSM) Surcharge shall not be applicable to Schedule SCS-3 Customer.

PAYMENT

Net monthly bills are due and payable twenty days from the date of the bill, and after that date the account becomes delinquent. A late payment charge of 1.5% on the current unpaid balance shall apply to delinquent accounts. If a bill is not paid, the Company shall have the right to suspend service, providing a ten day written or other required notice of such suspension has been given. When service is suspended for nonpayment of a bill, a reconnection service charge will apply.

RULES AND REGULATIONS

Service supplied under this schedule is subject to the Rules and Orders of the Public Service Commission of Wyoming and to the conditions of the contract for such service between the Company and the Customer not in conflict herewith.



Black Hills Wyoming Gas, LLC d/b/a Black Hills Energy
f/k/a Cheyenne Light, Fuel and Power Company

Wyo. P.S.C. Tariff No. 1

Original Sheet No. 28

RESERVED FOR FUTURE FILING



**Firm Gas Transportation Service
Rate Schedule TF**

Rate ID WY551
Original Sheet No. 29

**NATURAL GAS RATES
FIRM GAS TRANSPORTATION SERVICE
SCHEDULE TF**

APPLICABILITY

Applicable to Shippers having acquired by separate agreement, supplies of natural gas (Shipper's Gas) and where Company has available System capacity in excess of that presently required for service to existing firm gas sales Customers and firm Shippers. Service is applicable to firm transportation of Shipper's Gas from Company's Receipt Point(s) to the Delivery Point(s) through Company's System. Service provided hereunder is not available for transportation in interstate commerce and shall be in accordance with the Firm Gas Transportation Service Agreement (Service Agreement) between Company and Shipper, and the requirements of the Firm Gas Transportation Service provisions and the Gas Transportation Terms and Conditions of Company's Gas Transportation Tariff. Firm Capacity and Firm Supply quantities reserved under this rate schedule shall be designated for Receiving Party(s) at specific Delivery Point(s).

MONTHLY RATE – FIRM GAS TRANSPORTATION SERVICE CHARGES

Service and Facility Charge:

For the first firm service meter on Service Agreement.....	\$ 120.00
For each additional firm service meter on Service Agreement.....	\$ 120.00
Firm Capacity Reservation Charge, per Dth	\$ 3.27
Transportation Distribution Charge: Applicable to all of Shipper's Gas transported by Company up to Contracted Peak Day Quantity	
Standard Rate, per Dth	\$ 0.5730
Minimum Rate, per Dth	\$ 0.3820
Authorized Overrun Transportation Charge, per Dth	\$ 0.5730
Unauthorized Overrun Transportation Penalty Charge	
Standard Rate, per Dth	\$ 25.00
Minimum Rate, per Dth	\$ 0.5730



**Firm Gas Transportation Service
Rate Schedule TF**

Rate ID WY551
Original Sheet No. 29A

**NATURAL GAS RATES
FIRM GAS TRANSPORTATION SERVICE
SCHEDULE TF – CONTINUED**

MONTHLY RATE - BACKUP SUPPLY SALES SERVICE CHARGES

Firm Supply Reservation Charge, per Dth	\$ 0.0000
Backup Supply Sales Charge, per Dth	\$ 0.3820
Authorized Overrun Sales Charge, per Dth	\$ 0.3820
Unauthorized Overrun Supply Penalty Charge	
Standard Rate, per Dth	\$ 25.00
Minimum Rate, per Dth	\$ 2.50

MONTHLY MINIMUM CHARGES

The Monthly Minimum shall be the sum of a) the Service and Facility Charge(s), b) the Firm Capacity Reservation Charge, and c) the Firm Supply Reservation Charge (if applicable). In the event that Company is required to make any payments including but not limited to franchise fees or payments, sales taxes, occupancy taxes or the like, as a result of the transportation service being rendered to Shipper by Company, these charges will be included in billing from Company to Shipper.

GAS COST (RECONCILED) AND RATE SCHEDULE SUMMATION SHEET

The Firm Supply Reservation Charge and the Backup Supply Sales Charges are subject to the Gas Cost (Reconciled) commencing on Sheet No. 37. The total monthly rate, excluding the Transportation Service System Charge. If applicable, is shown on the Rate Schedule Summation Sheet No. 5A.

FUEL REIMBURSEMENT

Shippers receiving Firm Transportation Service shall include additional gas for Fuel Reimbursement to the quantity of gas delivered to Company. Unless otherwise specified, the Fuel Reimbursement for Firm Gas Transportation Service is 1.00%.

CAPACITY INTERRUPTION OF SERVICE

Transportation service in excess of Peak Day Quantity is subject to availability of System capacity in Company's System. Should Company, in its sole judgment, determine that adequate System capacity is unavailable, then Shipper is subject to immediate Capacity Interruption of transportation service for those quantities in excess of Peak Day Quantity.



NATURAL GAS RATES
FIRM GAS TRANSPORTATION SERVICE
SCHEDULE TF – CONTINUED

SUPPLY CURTAILMENT OF SERVICE

Transportation service hereunder is subject to receipt of adequate supplies of Shipper's Gas by Company. If supplies of Shipper's Gas are not available for receipt by Company or confirmed by Interconnecting Party, then Shipper may be subject to immediate Supply Curtailment of transportation service upon notification by Company.

FIRM CAPACITY SERVICE

Firm Capacity Service is required for those Shippers desiring to reserve firm capacity in Company's System. Shippers desiring Firm Capacity Service for or on behalf of Receiving Party(s), are required to submit to Company a Request for Transportation Service for each Delivery Point, which contains the Peak Day Quantity for which Shipper desires Company to reserve firm capacity in its System. Firm Capacity is made available to Shipper for and on behalf of Receiving Party only.

Firm Capacity Service will be made available as soon as practicable after Company determines that it has sufficient capacity to provide such service from the Receipt Point(s) to the Delivery Point(s) requested by Shipper, and will be subject to the Supply Curtailment and Capacity Interruption sections of the Gas Transportation Rules and Regulations.

Shipper shall be responsible to ensure the Peak Day Quantity is sufficient to meet the maximum quantity a Receiving Party will use at its individual Delivery Point(s). If Shipper's Peak Day Quantity at any Delivery Point is overrun by Receiving Party, the Company will increase such Peak Day Quantity for the remainder of the term of the Service Agreement, effective the first day of the Month in which the overrun occurs.

Shipper shall submit to Company a fully completed Request for Amendment/Change Notification to Gas Transportation Service Agreement any time Shipper desires to change its Peak Day Quantity. The completed request will either be approved or denied by Company within thirty (30) days of receipt thereof. If denied, written notification will be provided to Shipper detailing the reasons for denial, as well as an explanation of what changes would be necessary to make the request acceptable.



**Firm Gas Transportation Service
Rate Schedule TF**

Rate ID WY551
Original Sheet No. 29C

**NATURAL GAS RATES
FIRM GAS TRANSPORTATION SERVICE
SCHEDULE TF – CONTINUED**

FIRM CAPACITY SERVICE - CONTINUED

Firm Capacity Service at the revised Peak Day Quantity will commence when Company notifies Shipper that it has sufficient capacity to transport the revised Peak Day Quantity, subject to the Supply Curtailment and Capacity Interruption sections of the Gas Transportation Rules and Regulations. The Peak Day Quantity will be specified in the Service Agreement and the rate for Firm Capacity Service will be the Firm Capacity Reservation Charge.

FIRM SUPPLY RESERVATION SERVICE

Firm Supply Reservation Service is an option that allows Shippers to pay a reservation charge giving Shipper rights to purchase Backup Supply Sales Service should Shipper's Gas fail. Shippers desiring Firm Supply Reservation Service are required to submit to Company a Request for Transportation Service between March 1 and April 1 of each year for each Service Agreement which contains the Firm Supply Reservation Quantity that Shipper desires Company to reserve commencing May 1 of the same year. Such Firm Supply Reservation Quantity shall not be greater than the Peak Day Quantity requested and approved by Company for Firm Capacity Service. Company will review initial or subsequent Requests for Firm Supply Reservation Service on a first-come, first-serve basis, based upon the date of receipt of the request. The request will either be approved or denied by Company within thirty (30) days of receipt thereof. If denied, written notification will be provided to Shipper detailing the reasons for denial. Increases or decreases in the Firm Supply Reservation Quantity in subsequent requests shall be approved by Company at its sole discretion. Company will commence Firm Supply Reservation Service as soon as is practicable after it determines that sufficient supplies are available. Firm Supply Reservation Service shall be made available to Shipper for and on behalf of the Receiving Party(s) only. Shipper, in receiving said Firm Supply Reservation Service, acknowledges that it is acting for the Receiving Party(s) as the Receiving Party(s)' agent. The Firm Supply Reservation Quantity will be specified in the Service Agreement and the rate for Firm Supply Reservation Service will be the Firm Supply Reservation Charge.



**Firm Gas Transportation Service
Rate Schedule TF**

Rate ID WY551
Original Sheet No. 29D

**NATURAL GAS RATES
FIRM GAS TRANSPORTATION SERVICE
SCHEDULE TF - CONTINUED**

FIRM SUPPLY RESERVATION SERVICE – CONTINUED

If Shipper elects to purchase Firm Supply Reservation Service, and Company commences providing service under this option, then Company is obligated to provide natural gas supplies to Receiving Party. Company will not be obligated to stand ready to provide firm gas sales service at a level above the Firm Supply Reservation Quantity reserved for Receiving Party(s) who elect to return to sales service.

BACKUP SUPPLY SALES SERVICE

Backup Supply Sales Service is an option available to Shippers that can be used in the event that adequate supplies of Shipper's Gas are not available for receipt by Company. Shippers who purchase Firm Supply Reservation Service have rights to purchase Firm Backup Supply Sales Service up to the Firm Supply Reservation Quantity identified in Shipper's Service Agreement at the Backup Supply Sales Charge. In order to purchase Firm Backup Supply Sales quantities during a month, Shipper must nominate such quantities in accordance with Company's Nomination Procedures. Quantities sold to Shippers in excess of Shipper's Firm Supply Reservation Quantity will be considered on an interruptible basis.

Shippers who have not purchased Firm Supply Reservation Service can nominate Backup Supply Sales from Company in accordance with Company's Nomination Procedures and, if available, can purchase those quantities authorized for sale by Company at the Backup Supply Sales Charge. If Backup Supply Sales Service is unavailable from Company, the Receiving Party shall discontinue use of any gas quantities in excess of those available from Shipper. Consumption of any gas quantities not authorized by Company in excess of those available from Shipper shall be billed to Shipper under the provisions of the Unauthorized Overrun Supply Penalty Service section of this rate schedule.



**Firm Gas Transportation Service
Rate Schedule TF**

Rate ID WY551
Original Sheet No. 29E

**NATURAL GAS RATES
FIRM GAS TRANSPORTATION SERVICE
SCHEDULE TF - CONTINUED**

AUTHORIZED OVERRUN TRANSPORTATION SERVICE

In the event Shipper desires Company to transport Shipper's Gas in excess of the Peak Day Quantity, Company may, at its sole discretion, provide such Authorized Overrun Transportation Service on an interruptible basis, provided Company has sufficient capacity and receives Shipper's Gas at the Receipt Point(s). Company will provide Authorized Overrun Transportation Service in accordance with the Supply Curtailment and Capacity Interruption sections of the Gas Transportation Rules and Regulations. Authorized Overrun Transportation Service will be provided at the Authorized Overrun Transportation Charge. Increases in the Peak Day Quantity will not occur if Company provides Authorized Overrun Transportation Service unless the Peak Day Quantity at any Delivery Point is overrun by Receiving Party.

UNAUTHORIZED OVERRUN TRANSPORTATION PENALTY SERVICE

In the event Company does not authorize transportation at any Delivery Point in excess of the Peak Day Quantity for that Delivery Point, then all gas delivered to Shipper or on Shipper's behalf in excess of the Peak Day Quantity for such Delivery Point, including both transportation and sales quantities, shall be subject to the Unauthorized Overrun Transportation Penalty Charge. Charges shall not be less than the minimum Unauthorized Overrun Transportation Penalty Charge or more than the Standard Unauthorized Overrun Transportation Penalty Charge. Unauthorized Overrun Transportation Penalty Charges shall not be assessed if the aggregate total of the individual overrun quantities for each exhibit under Shipper's Service Agreement which is in effect at the time the overrun occurs are five (5) Dth or less. In the case of use of gas during periods of Supply Curtailment, Capacity Interruption or Restricted Delivery Days, Company shall have the right to charge Shipper the Standard Unauthorized Overrun Transportation Penalty Charge. In determining the level of the Unauthorized Overrun Transportation Penalty Charge, Company shall charge all Shippers similar charges in all overrun cases, whether or not they occur on the same day, providing that the circumstances surrounding the overrun are similar.



**Firm Gas Transportation Service
Rate Schedule TF**

Rate ID WY551
Original Sheet No. 29F

**NATURAL GAS RATES
FIRM GAS TRANSPORTATION SERVICE
SCHEDULE TF - CONTINUED**

AUTHORIZED OVERRUN SALES SERVICE

If Shipper's supply of natural gas should fail for whatever reason, and Shipper has contracted for Firm Supply Reservation Service and desires to purchase gas from Company in excess of Shipper's Firm Supply Reservation Quantity Company may, at its sole discretion, provide Authorized Overrun Sales Service on an interruptible basis. This service will be provided at the Authorized Overrun Sales Charge.

UNAUTHORIZED OVERRUN SUPPLY PENALTY SERVICE

In the event Company does not authorize the sale of Backup Supply sales gas which exceeds the Shipper's Firm Supply Reservation Quantity, then all such quantities delivered to Shipper for and on behalf of Receiving Party in excess of Shipper's Firm Supply Reservation Quantity shall be considered Unauthorized Sales Gas. If on any Day Shipper's supply of natural gas should fail for whatever reason or is otherwise inadequate to supply actual usage of Shipper's Receiving Party(s), and Shipper desires to use Backup Supply sales gas, then Shipper shall nominate in accordance with Company's Nomination Procedures and Company may provide interruptible supplies at the Backup Supply Sales Charge to Shipper, if available. If Shipper uses more than the quantity authorized by Company, or if such supplies are not available and the Receiving Party continues to use gas during the period of such failure, then Shipper will be required to pay Company the Unauthorized Overrun Supply Penalty Charge, in addition to the Backup Supply Sales Charge, for all gas used during such period in excess of the quantities authorized.

In the case of use of Unauthorized Sales gas during periods of Supply Curtailment, Capacity Interruption or Restricted Delivery Days, Company shall have the right to charge Shipper the Standard Unauthorized Overrun Supply Penalty Charge for all such quantities delivered to Shipper in excess of Shipper's Firm Supply Reservation Quantity. Charges shall not be less than the minimum Unauthorized Overrun Supply Penalty Charge or more than the Standard Unauthorized Overrun Supply Penalty Charge. Unauthorized Overrun Supply Penalty Charges shall not be assessed if the aggregate total of the individual overrun quantities for each exhibit under Shipper's Service Agreement which is in effect at the time the overrun occurs are five (5) Dth or less. In determining the level of the Unauthorized Overrun Supply Penalty Charge, Company shall charge all Shippers similar charges in all overrun cases, whether or not they occur on the same day, providing that the circumstances surrounding the overrun are similar.



**Firm Gas Transportation Service
Rate Schedule TF**

Rate ID WY551
Original Sheet No. 29G

NATURAL GAS RATES

FIRM GAS TRANSPORTATION SERVICE

SCHEDULE TF - CONTINUED

COMMUNICATION LINE INSTALLATION AND MAINTENANCE

If required by Company for electronic metering, Shipper assumes responsibility for the installation and maintenance costs for a communication line necessary for electronic metering of gas quantities transported.

Shipper will provide an "analog/pulse" communication line to the meter via conduit, suitable underground cable, or properly mounted outdoor grade wire of sufficient length to extend to the meter index, plus an additional five feet for wiring of the instruments prior to initiation of service by Company. Communication wire installation will be subject to the National Electric Safety Code Requirement. Shipper shall coordinate installation of the communication line with Company.

Receiving Party will maintain the communication line and cause any interruption in service over the communication line to be repaired as soon as possible. Shipper or Receiving Party will notify Company in advance of any planned outages. In the event the communication line is out of service for a period of more than two (2) days, (and Company determines that such out of service condition is the result of a communication line failure,) Company shall notify Shipper in writing that the communication line is inoperative and Shipper shall take the necessary measures to ensure the communication line is reactivated and operational within a two (2) week correction period identified by Company in its notification letter. The grant of the two (2) week correction period does not waive the tariff provision under Restrictive Delivery Day. During the period from the date when the phone line became inoperative to the end of the two (2) week correction period specified in Company's notification letter to Shipper, Shipper shall be responsible for making transportation nominations on behalf of the Receiving Party to Company in accordance with Company's nomination procedures. If, following the two (2) week correction period Company is required to make site trip(s), in addition to the initial trip made by Company to confirm the communication line outage and the final trip to synchronize the meter with the communication line, the Company shall charge the Shipper the Non-Gratuitous Labor Charge and other related charges that may be applicable as provided under the Gas Service Schedule of Charges for Rendering Service in Company's tariff.



**Firm Gas Transportation Service
Rate Schedule TF**

Rate ID WY551
Original Sheet No. 29H

**NATURAL GAS RATES
FIRM GAS TRANSPORTATION SERVICE
SCHEDULE TF - CONTINUED**

COMMUNICATION LINE INSTALLATION AND MAINTENANCE - CONTINUED

Consumption during the period the communication line was inoperative, will be prorated on a daily basis. If the communication line is not made operative within the period designated in the notification, Company shall treat all gas delivered subsequent to the two (2) week correction period specified by the Company in its written notification and ending on the date customer's communication line is operative as sales gas, and Company shall no longer accept transportation nominations for that Receiving Party. Such quantities may be sold to Shipper at Company's Back Up Supply Sales Charge, in addition to Unauthorized Overrun Supply Penalty Charges which may be charged during a Restrictive Delivery Day, Interruption or Curtailment.

TERMINATION

In the event Shipper or Receiving Party gives thirty (30) days' written notice of its intention to cancel Firm Gas Transportation Service for any or all Delivery Points prior to the end of the Contract Period or any subsequent Contract Period, as provided for in said Service Agreement, Shipper shall be obligated to pay Company a termination charge, equal to the Firm Capacity Reservation Charge and the Firm Supply Reservation Charge, if applicable, multiplied by the Peak Day Quantity and Firm Supply Reservation Quantity respectively, as described in the Service Agreement, for every month remaining in any Contract Period. To the extent that the Receiving Party subscribes to Company's firm sales service or firm transportation service under a different service agreement in place of such terminated service, the termination charge will be waived. If Firm Supply Reservation Service has not been purchased for Receiving Party under Shipper's Firm Gas Transportation Service Agreement for a quantity equal to Receiving Party's Peak Day Quantity, then conversion to firm sales shall be contingent upon Company's determination that firm supply is available for sale to Receiving Party. In addition, all costs incurred by Company relating to any specific facility charges specified in Service Agreement shall become immediately due and payable to Company. All conversions from firm transportation to sales service shall be effective at the beginning of a Month. The Receiving Party will be eligible to return to transportation service hereunder one (1) year after its conversion to Company's firm sales service, through submission of a Request for Transportation in accordance with Rules and Regulations of Company's Gas Transportation tariff.



**Firm Gas Transportation Service
Rate Schedule TF**

Rate ID WY551
Original Sheet No. 29I

**NATURAL GAS RATES
FIRM GAS TRANSPORTATION SERVICE
SCHEDULE TF - CONTINUED**

CONTRACT PERIOD

Firm Supply Service shall commence upon date of first delivery and shall terminate one (1) year from the next May 1, subsequent to the effective date of the Service Agreement, and continuing from year to year after the initial one (1) year period until canceled as provided by said Service Agreement. Company reserves the right to commence Firm Supply Service only when sufficient supplies are available. Firm Capacity Service shall commence upon date of first delivery and shall terminate one (1) year from the next May 1, subsequent to the effective date of the Service Agreement, and continuing from year to year after the initial one (1) year period until canceled as provided by said Service Agreement. Company will commence Firm Gas Transportation Service as soon as is practicable as long as sufficient capacity is available.

DEMAND SIDE MANAGEMENT

Demand Side Management (DSM) Surcharge shall not be applicable to Schedule TF Customers.

PAYMENT

Net monthly bills are due and payable twenty days from the date of the bill, and after that date the account becomes delinquent. A late payment charge of 1.5% on the undisputed unpaid balance shall apply to delinquent accounts.



**Interruptible Gas Transportation Service
Rate Schedule TI**

Rate ID WY552
Original Sheet No. 30

**NATURAL GAS RATES
INTERRUPTIBLE GAS TRANSPORTATION SERVICE
SCHEDULE TI**

APPLICABILITY

Applicable to Shippers having acquired by separate agreement, supplies of natural gas (Shipper's Gas) and where Company has available System capacity in excess of that presently required for service to existing gas sales Customers and Firm Transportation Shippers. Service is applicable to interruptible transportation of Shipper's Gas from Company's Receipt Point(s) to Shipper's Delivery Point(s) through Company's System. Service provided hereunder is not available for transportation in interstate commerce and shall be in accordance with the Interruptible Gas Transportation Service Agreement (Service Agreement) between Company and Shipper, and the requirements of the Interruptible Gas Transportation Service provisions and the Gas Transportation Rules and Regulations of Company's Gas Transportation Tariff.

MONTHLY RATE - INTERRUPTIBLE GAS TRANSPORTATION SERVICE CHARGES

Service and Facility Charge:	
For the first interruptible service meter on Service Agreement.....	\$280.00
For each additional interruptible service meter on Service Agreement	\$280.00
Transportation Distribution Charge:	
Applicable to all of Shipper's Gas transported by Company up to contracted Maximum Daily Transportation Quantity	
Standard Rate, per Dth	\$ 0.5730
Minimum Rate, per Dth	\$ 0.3820
Authorized Overrun Transportation Charge, per Dth	\$ 0.5730
Unauthorized Overrun Transportation Penalty Charge	
Standard Rate, per Dth	\$ 25.00
Minimum Rate, per Dth	\$ 0.5730



**Interruptible Gas Transportation Service
Rate Schedule TI**

Rate ID WY552
Original Sheet No. 30A

**NATURAL GAS RATES
INTERRUPTIBLE GAS TRANSPORTATION SERVICE
SCHEDULE TI - CONTINUED**

MONTHLY RATE - BACKUP SUPPLY SALES SERVICE CHARGES

On-Peak Demand Charge, per Dth	\$ 4.6800
Backup Supply Sales Charge, per Dth	\$ 0.3820
Unauthorized Overrun Supply Penalty Charge	
Standard Rate, per Dth	\$ 25.00
Minimum Rate, per Dth	\$ 2.50

MONTHLY MINIMUM CHARGES

The Monthly Minimum shall be the sum of a) the Service and Facility Charge(s), and b) the On-Peak Demand Charge (if applicable).

In the event that Company is required to make any payments including but not limited to franchise fees or payments, sales taxes, occupancy taxes or the like, as a result of the transportation service being rendered to Shipper by Company, these charges will be included in billing from Company to Shipper.

GAS COST (RECONCILED) AND RATE SCHEDULE SUMMATION SHEET

The On-Peak Demand Charge and the Backup Supply Sales Charges are subject to the Gas Cost (Reconciled) commencing on Sheet No. 37. The total monthly rate, excluding the Transportation Service System Charge, if applicable, is shown on the Rate Schedule Summation Sheet No. 5B.

FUEL REIMBURSEMENT

Shippers receiving Interruptible Transportation Service shall include additional gas for Fuel Reimbursement to the quantity of gas delivered to Company. Unless otherwise specified, the Fuel Reimbursement for Interruptible Transportation Service is 1.00%.

CAPACITY INTERRUPTION OF SERVICE

Transportation service hereunder is subject to availability of System capacity in Company's System. Should Company, in its sole judgment, determine that adequate System capacity is unavailable, then Shipper is subject to immediate Capacity Interruption of transportation service.



**Interruptible Gas Transportation Service
Rate Schedule TI**

Rate ID WY552
Original Sheet No. 30B

**NATURAL GAS RATES
INTERRUPTIBLE GAS TRANSPORTATION SERVICE
SCHEDULE TI - CONTINUED**

SUPPLY CURTAILMENT OF SERVICE

Transportation service hereunder is subject to receipt of adequate supplies of Shipper's Gas by Company. If supplies of Shipper's Gas are not available for receipt by Company or confirmed by Interconnecting Party, then Shipper may be subject to immediate Supply Curtailment of transportation service upon notification by Company.

Shipper may, at its option, request Backup Supply Sales Service. If Company's Backup Supply Sales Service is not available, then Shipper is subject to curtailment of transportation service. In the case of use of gas during periods of Supply Curtailment, Company shall have the right to terminate service hereunder and return Receiving Party to sales service if applicable.

BACKUP SUPPLY SALES SERVICE

Backup Supply Sales Service is an option available to Shippers that can be used in the event that adequate supplies of Shipper's Gas are not available for receipt by Company. In the event that adequate supplies of Shipper's Gas are not available for receipt by Company, Company shall sell to and Shipper shall purchase from Company at the Backup Supply Sales Charge, those quantities nominated by Shipper in accordance with Company's Nomination Procedures and authorized for sale by Company. If Backup Supply Sales Service is unavailable from Company, the Receiving Party shall discontinue use of any gas quantities in excess of those available from Shipper. Consumption of any gas quantities not authorized by Company in excess of those available from Shipper shall be billed to Shipper under the provisions of the Unauthorized Overrun Penalty Service section of this rate schedule.

AUTHORIZED OVERRUN TRANSPORTATION SERVICE

In the event Shipper desires Company to transport Shipper's Gas in excess of the Maximum Daily Transportation Quantity, Company may, at its sole discretion, provide such Authorized Overrun Transportation Service on an interruptible basis, provided Company has sufficient capacity and receives Shipper's Gas at the Receipt Point(s). Company will provide Authorized Overrun Transportation Service in accordance with the Supply Curtailment and Capacity Interruption sections of the Gas Transportation Rules and Regulations. Authorized Overrun Transportation Service will be provided at the Authorized Overrun Transportation Charge.



**Interruptible Gas Transportation Service
Rate Schedule TI**

Rate ID WY552
Original Sheet No. 30C

**NATURAL GAS RATES
INTERRUPTIBLE GAS TRANSPORTATION SERVICE
SCHEDULE TI - CONTINUED**

UNAUTHORIZED OVERRUN TRANSPORTATION PENALTY SERVICE

In the event Company does not authorize transportation in excess of the Maximum Daily Transportation Quantity or interrupts transportation service due to the lack of System capacity, and Shipper's Gas was available for transportation, then all gas used at each Delivery Point under Shipper's Service Agreement in excess of the Maximum Daily Transportation Quantity or during the period of Capacity Interruption shall be subject to the Unauthorized Overrun Transportation Penalty Charge. In the case of use of gas during periods of Capacity Interruption, or Restricted Delivery Days, Company shall have the right to charge Shipper the Standard Unauthorized Transportation Penalty Charge. Charges shall not be less than the minimum Unauthorized Overrun Transportation Penalty Charge or more than the Standard Unauthorized Overrun Transportation Penalty Charge. Unauthorized Overrun Transportation Penalty Charges shall not be assessed if the aggregate total of the individual overrun quantities for each exhibit under Shipper's Service Agreement which is in effect at the time the overrun occurs are five (5) Dth or less. In determining the level of the Unauthorized Overrun Transportation Penalty Charge, Company shall charge all Shippers similar charges in all overrun cases, whether or not they occur on the same day, providing that the circumstances surrounding the overrun are similar.

UNAUTHORIZED OVERRUN SUPPLY PENALTY SERVICE

Should Company interrupt transportation service due to the lack of System capacity, and Shipper's Gas was not available for transportation, then all interruptible gas used during the period of Capacity Interruption shall be at the Unauthorized Overrun Supply Penalty Charge in addition to the Backup Supply Sales Charge. If at any time Shipper's supply of natural gas should fail for whatever reason or is otherwise inadequate to supply actual usage of the Receiving Party(s), then Shipper shall nominate Back Up Supplies in accordance with Company's Nomination Procedures and Company will provide to Shipper interruptible supplies at the Backup Supply Sales Charge, if available. If Shipper uses more than the quantity authorized by the Company or if Backup Supply Sales Service is unavailable from Company and Receiving Party continues to use gas, then Shipper will be required to pay Company the Unauthorized Overrun Supply Penalty Charge in addition to the Backup Supply Sales Charge for all gas used during such period in excess of the quantities authorized.



**Interruptible Gas Transportation Service
Rate Schedule TI**

Rate ID WY552
Original Sheet No. 30D

**NATURAL GAS RATES
INTERRUPTIBLE GAS TRANSPORTATION SERVICE
SCHEDULE TI - CONTINUED**

UNAUTHORIZED OVERRUN SUPPLY PENALTY SERVICE - CONTINUED

In the case of use of unauthorized Sales Gas during periods of Supply Curtailment, Capacity Interruption or Restricted Delivery Days, Company shall have the right to charge Shipper the Standard Unauthorized Overrun Supply Penalty Charge. Charges shall not be less than the minimum Unauthorized Overrun Supply Penalty Charge or more than the Standard Unauthorized Overrun Supply Penalty Charge. Unauthorized Overrun Supply Penalty Charges shall not be assessed if the aggregate total of the individual overrun quantities for each exhibit under Shipper's Service Agreement which is in effect at the time the overrun occurs are five (5) Dth or less. In determining the level of the Unauthorized Overrun Supply Penalty Charge, Company shall charge all Shippers similar charges in all overrun cases, whether or not they occur on the same day, providing that the circumstances surrounding the overrun are similar.

CONTRACT PERIOD

Unless otherwise agreed, this schedule is available only under an Interruptible Gas Transportation Service Agreement for a minimum period of one (1) year commencing on the effective date of the Service Agreement, and continuing from year to year after the initial one (1) year period until canceled as provided by said Service Agreement.

ON-PEAK GAS

Shippers have the option to contract, on behalf of a Receiving Party, those minor amounts of firm sales gas that are not subject to Supply Curtailment or Capacity Interruption. Such gas is normally supplied for the pilots of gas consuming appliances and other such minor uses. Commitments for On-Peak Service shall be at the option of Company, dependent upon the sufficiency of pipeline and System capacity with respect to the requirements of Company's other firm gas sales Customers and firm Shippers. The maximum daily quantity of On-Peak gas to be supplied to each Receiving Party shall be specified in the Service Agreement between the Shipper and Company.



**Interruptible Gas Transportation Service
Rate Schedule TI**

Rate ID WY552
Original Sheet No. 30E

**NATURAL GAS RATES
INTERRUPTIBLE GAS TRANSPORTATION SERVICE
SCHEDULE TI - CONTINUED**

ADVANCE NOTIFICATION

Transportation service under this schedule is interruptible and is subject to immediate discontinuance to Shipper by Company in accordance with the Service Agreement. Company, whenever circumstances reasonably permit, will endeavor to give Shipper advance notice of Supply Curtailment or Capacity Interruption of transportation service by telephone or otherwise, and Shipper shall ensure that each Receiving Party shall immediately discontinue the use of gas when and as directed by Company. Authorized representatives of Company shall have at all times the right of ingress and egress to Receiving Party's premises for purposes of ensuring the Rules and Regulations applicable to this service in this tariff are maintained. Upon determination by Company that the necessity for Supply Curtailment or Capacity Interruption has ceased, gas transportation service shall be resumed. If the Receiving Party fails to discontinue the use of gas as provided herein, Company may discontinue service to the Receiving Party by physically shutting off the gas supply.

DEMAND SIDE MANAGEMENT

Demand Side Management (DSM) Surcharge shall not be applicable to Schedule TI Customers.

PAYMENT

Net monthly bills are due and payable twenty days from the date of the bill, and after that date the account becomes delinquent. A late payment charge of 1.5% on the undisputed unpaid balance shall apply to delinquent accounts.



**Compressed Gas Service
Rate Schedule CNG**

Original Sheet No. 31

**NATURAL GAS RATES
COMPRESSED NATURAL GAS SERVICE
SCHEDULE CNG**

APPLICABILITY

Applicable to customers contracting for Compressed Natural Gas Service at Company's fueling station(s) as set forth in the agreement between Company and the customer. Compressed Natural Gas Service is the furnishing of Compressed Natural Gas at Company's fueling stations for the fueling of Compressed Natural Gas Self-propelled Vehicles, or those Self-propelled Vehicles which have been properly converted to Compressed Natural Gas use. Not applicable to resale service.

MONTHLY RATE

Distribution Charge, all Compressed Natural Gas purchased per Dth \$5.9778

The Distribution Charge may also be expressed in \$ per Equivalent Gallon at Company's fueling station(s).

COST ADJUSTMENT AND RATE SCHEDULE SUMMATION SHEET

This rate schedule is subject to the Gas Cost (Reconciled) commencing on Sheet No. 37. The total monthly rate is shown on the Rate Schedule Summation Sheet, Sheet No. 5C.

DEMAND SIDE MANAGEMENT

Demand Side Management (DSM) Surcharge shall not be applicable to Schedule CNG Customers.

PAYMENT

Net monthly bills are due and payable twenty days from the date of the bill, and after that date the account becomes delinquent. A late payment charge of 1.5% on the undisputed unpaid balance shall apply to delinquent accounts.

CONTRACT PERIOD

This schedule is available only under the Company's standard agreement for Compressed Natural Gas Service for a minimum period of one year and thereafter from year to year until canceled as provided by said agreement.



**Compressed Gas Service
Rate Schedule CNG**

Original Sheet No. 31A

**NATURAL GAS RATES
COMPRESSED NATURAL GAS SERVICE
SCHEDULE CNG - CONTINUED**

RULES AND REGULATIONS

Service supplied under this schedule is subject to the terms and conditions set forth in the Company's Rules and Regulations on file with the Public Service Commission of Wyoming, the terms and conditions of the Compressed Natural Gas Service agreement, and the following special conditions:

1. Definitions of Terms

Compressed Natural Gas (CNG) is natural gas that will be used, in either a gaseous or liquefied state, as fuel in any Self-propelled Vehicle.

Equivalent Gallon is the amount of CNG that contains an average lower heating value of one hundred fourteen thousand (114,000) BTUs, but in no case contains a lower heating value of less than one hundred ten thousand (110,000) BTUs.

Self-propelled Vehicles are automobiles, trucks, buses, trains, aircraft, boats, non-road farm vehicles, and construction vehicles, or any other self-propelled vehicle.

2. Access to Company's Compressed Natural Gas dispensing equipment shall be controlled by Company by means of cards issued to the individual Compressed Natural Gas Service users as provided in the agreement.

3. Information posted on the Company's fueling station(s) dispensing equipment shall include, but not be limited to:

Equivalent Gallons delivered
Price per Equivalent Gallon
Total cost of CNG delivered



**Natural Gas Vehicle Service
Rate Schedule NGV**

Original Sheet No. 32

**NATURAL GAS RATES
NATURAL GAS VEHICLE SERVICE
SCHEDULE NGV**

APPLICABILITY

Applicable to customers contracting for Natural Gas Vehicle Service at the customer's premises as set forth in the agreement between Company and the customer. Natural Gas Vehicle Service is the Company's furnishing of Equipment to customer for the fueling of Compressed Natural Gas Self-propelled Vehicles, or those Self-propelled Vehicles which have been properly converted to Compressed Natural Gas use. The Company's obligation to provide Natural Gas Vehicle Service is subject to availability of the Equipment. Not applicable to resale service.

MONTHLY RATE

Facility Charge is the per dollar Group Average Capital
Cost of the Equipment times the applicable factor as follows:

5 Year Equipment.....	\$ 0.02072
10 Year Equipment.....	\$ 0.01279
15 Year Equipment.....	\$ 0.01014
20 Year Equipment.....	\$ 0.00882
30 Year Equipment.....	\$ 0.00750

Option A, includes the cost of one compressor head replacement each year, per unit ..	\$ 16.00
Option B, shall be billed to Customer as costs are incurred by Company, per unit.....	--

RATE SCHEDULE SUMMATION SHEET

The total monthly rate is shown on the Rate Schedule Summation Sheet, Sheet No. 5C.

DEMAND SIDE MANAGEMENT

Demand Side Management (DSM) Surcharge shall not be applicable to Schedule NGV Customers.

PAYMENT

Net monthly bills are due and payable twenty days from the date of the bill, and after that date the account becomes delinquent. A late payment charge of 1.5% on the undisputed unpaid balance shall apply to delinquent accounts.



**Natural Gas Vehicle Service
Rate Schedule NGV**

Original Sheet No. 32A

**NATURAL GAS RATES
NATURAL GAS VEHICLE SERVICE
SCHEDULE NGV - CONTINUED**

CONTRACT PERIOD

This schedule is available only under the Company's standard service agreement for a minimum period of one year and thereafter from year to year until canceled as provided by said agreement.

RULES AND REGULATIONS

Service supplied under this schedule is subject to the terms and conditions set forth in the Company's Rules and Regulations on file with the Public Service Commission of Wyoming, the terms and conditions of the Natural Gas Vehicle Service agreement, and the following special conditions:

1. **Definitions of Terms**

Equipment is the Compressed Natural Gas Equipment as described in the service agreement between Company and customer for the fueling of and utilization in Compressed Natural Gas Self-propelled Vehicles. Equipment will be classified as it is purchased by the Company according to vintage price, kind, and expected primary life. Such Equipment group will have a Group Average Capital Cost (GAC) which will be used for all Equipment within that group. Equipment with a value in excess of \$5,000 will be provided at the discretion of the Company. At the Company's option customers may be offered Equipment under the agreements where the payment will be on a \$ per Equivalent Gallon. In these cases, the per gallon charge will be calculated by using the appropriate charges and the expected usage of the customer. Such agreements will include a minimum usage requirement so that the minimum charges will be recovered.

Equivalent Gallon is the amount of CNG that contains an average lower heating value of one hundred fourteen thousand (114,000) BTUs, but in no case contains a lower heating value of less than one hundred ten thousand (110,000) BTUs.

Self-Propelled Vehicles are automobiles, trucks, buses, trains, aircraft, boats, non-road farm vehicles, and construction vehicles, or any other self-propelled vehicle.

2. Company shall maintain ownership of the Equipment, and all Equipment must be used on customer's premises or Self-propelled Vehicle(s).



Black Hills Wyoming Gas, LLC d/b/a Black Hills Energy
f/k/a Cheyenne Light, Fuel and Power Company

Wyo. P.S.C. Tariff No. 1

Original Sheet No. 33-34

RESERVED FOR FUTURE FILING



Schedule of Dekatherm Conversion Factors

Original Sheet No. 35

**NATURAL GAS RATES
SCHEDULE OF DEKATHERM CONVERSION FACTORS**

Following is a summary of the factors used by the Company to convert metered volumes to dekatherms.

Altitude Factors

The following is a summary of the currently effective Altitude Factors utilized by the Company for the purpose of converting all customer classes' metered volumes to dekatherms. These Altitude Factors are developed based on the mean altitude of each range utilizing the procedure as set forth on Sheet Nos. R71 through R73.

Range	From	To	Mean Altitude (H)	Altitude Factor (F _p)
1	4,501	5,100	4,800	0.8534
2	5,101	5,700	5,400	0.8357
3	5,701	6,300	6,000	0.8181

Energy Factors

For the purpose of converting residential and commercial customer classes' metered volumes to dekatherms, the Energy Factors shall be calculated, and revised quarterly effective January 1, April 1, July 1, and October 1 of each year, based upon an analysis of the Heating Values for the three-month period ending one month prior to these dates. The Company shall file a report with the Commission prior to the effective date of each such revision detailing the calculation of the revised Energy Factors to be effective for the next quarter, accompanied by such supporting data and information as the Commission may require from time to time.

Temperature Factor

For the purpose of converting residential and commercial customer classes' metered volumes to dekatherms, the Temperature Factor will be set at 1.0000 until revised by the Company subject to Commission approval.



Black Hills Wyoming Gas, LLC d/b/a Black Hills Energy
f/k/a Cheyenne Light, Fuel and Power Company

Wyo. P.S.C. Tariff No. 1

Original Sheet No. 36

RESERVED FOR FUTURE FILING



Gas Cost (Reconciled)

Original Sheet No. 37

**NATURAL GAS RATES
GAS COST (RECONCILED)**

APPLICABILITY

All rate schedules for natural gas service are subject to a Gas Cost (Reconciled) (GCR) to reflect the total delivered cost of gas purchased from Company's suppliers. Pursuant to the Wyoming Public Service Commission Rules, the Company will file proposed rate adjustments to reflect cost changes to the GCR. The GCR rate will be applied on a prorated basis to all rate classes with usage effective monthly beginning on the 1st of each month or as requested in its application or as otherwise approved by the Public Service Commission. The company may also request no change in the GCR rate when the change for Firm Service Customers is no more than fifteen cents above or below (+/- \$0.15) the existing GCR rate. The GCR for all applicable rate schedules is as set forth on Sheet No. 37D and will be added to the Company's Base Rates for billing purposes.

DEFINITIONS

Commodity Balancing Account (CBA)

An account which accumulates the difference between Recovered Gas Cost and Actual Gas Cost. The CBA will be determined monthly by subtracting Recovered Gas Cost from Actual Gas Cost with the result, positive or negative added to the CBA on a monthly basis. If the CBA reflects an amount due to customers, interest will be calculated using 1/12th of the Commission's Authorized Interest Rate as defined in the Commission's Rules times the ending monthly balance of the CBA. The interest will then be added (credited) to the over-collected balance on a monthly basis.

Current Gas Cost

A rate component of the GCR, calculated to the nearest one-tenth of a mill per dekatherm (\$0.0001/Dth), which is equal to the Projected Commodity Gas Cost divided by the expected sales volume, in Dth, during the GCR Effective Period.



Gas Cost (Reconciled)

Original Sheet No. 37A

NATURAL GAS RATES
GAS COST (RECONCILED) – CONTINUED

DEFINITIONS - CONTINUED

Projected Commodity Gas Cost

The cost of gas commodity projected to be reasonably incurred by the Company during the GCR Effective Period. This cost includes gas purchases, transmission, gathering, compression, balancing, treating, processing, storage, and like services performed by others for the purpose of effectuating delivery of gas commodity to the Company's natural gas facilities along with directly related applicable taxes, price hedging or forward contracting arrangements, and any other prudent commodity related expenditures projected to be incurred by the Company in providing service to its customers and specifically approved by the Public Service Commission for inclusion in the GCR.

For the purposes of determining the cost of gas purchases in the Projected Commodity Gas Cost, the Company will utilize an average of a NYMEX forecast less the appropriate basis differentials for the various supply delivery points for the GCR Effective Period.

GCR Effective Period

A one month period of time, beginning on the 1st of the month that the GCR rate change is intended to be in effect or such other duration and effective date as the Company may request in its application or other such period directed by the Public Service Commission. This rate shall remain in effect until a new rate is authorized in accordance with Public Service Commission Rules.

Deferred Gas Cost

The rate component of the GCR, calculated to the nearest one-tenth of a mill per dekatherm (\$0.0001/Dth), designed to amortize the balance of the CBA over a twelve month period.

This rate component is equal to the forecast balance of the CBA for the month-end immediately preceding the effective date divided by the expected sales volume, in Dth, for the twelve month amortization period beginning with the proposed effective date of the new GCR tariff. The rate will be determined on an annual basis. The Company may file an application to adjust this rate component more frequently as needed.



Gas Cost (Reconciled)

Original Sheet No. 37B

NATURAL GAS RATES
GAS COST (RECONCILED) – CONTINUED

DEFINITIONS – CONTINUED

Recovered Gas Cost

The amount includes the actual monthly billed revenue accumulated in FERC Account 191.

Actual Gas Cost

Actual Gas Cost is calculated monthly and includes the prudently incurred cost of gas purchases, transmission, gathering, compression, balancing, treating, processing, storage, and like services performed by others for the purpose of effectuating delivery of gas commodity to the Company's natural gas facilities along with directly related applicable taxes, price hedging or forward contracting arrangements, and any other commodity related expenditures incurred by the Company in providing service to its customers and specifically approved by the Public Service Commission for inclusion in the GCR.

DETERMINATION OF GAS COST (RECONCILED)

For the purpose of computing the GCR rate, the following formula will be used:

$$\text{GCR} = (\text{C} + \text{D} + \text{I})$$

C = Current Gas Cost

D = Deferred Gas Cost

I = Incentive Adjustment

The revised GCR will replace the previous GCR.

INCENTIVE ADJUSTMENT

The company may file for an Incentive Adjustment in accordance with the provisions of W.S. § 37-3-115.



Gas Cost (Reconciled)

Original Sheet No. 37C

NATURAL GAS RATES
GAS COST (RECONCILED) - CONTINUED

TREATMENT OF PIPELINE REFUNDS

Application shall be made to the Public Service Commission of Wyoming for approval of a refund plan for the disposition of each pipeline refund received from a pipeline supplier including the interest received thereon. If the Company applies for an incentive adjustment, the application shall also include sufficient justification for retention of not more than ten percent (10%) of the pipeline supplier refund, pursuant to Wyoming Statute § 37-3-115 as an incentive to secure lower pipeline rates before the various regulatory agencies.

INFORMATION TO BE FILED WITH THE PUBLIC SERVICE COMMISSION OF WYOMING

Each filing of a Gas Cost (Reconciled) revision will be accomplished by filing an application and will be accompanied by such supporting data and information required by the Public Service Commission of Wyoming and necessary to support the reasonableness of the costs and the requested rates.



Gas Cost (Reconciled)

Second Revised Sheet No. 37D
Cancels First Revised Sheet No. 37D

**NATURAL GAS RATES
GAS COST (RECONCILED) – CONTINUED**

Rate Cost Schedule	Sheet No.	Billing Units	Projected Gas Cost	Deferred Gas Cost	Incentive Adjustment	Gas Adjustment
RG	10	Dth	\$2.6506	\$0.2583	\$0.0000	\$2.9089
CG	15	Dth	\$2.6506	\$0.2583	0.0000	\$2.9089
IG	20	Dth	\$2.6506	\$0.2583	0.0000	\$2.9089
SCS-1	25	Dth	\$2.6506	\$0.2583	0.0000	\$2.9089
SCS-2	26	Dth	\$2.6506	\$0.2583	0.0000	\$2.9089
TF	29	Dth (1)	\$3.1085	\$0.0000	0.0000	\$3.1085
TF	29	Dth	\$2.6506	\$0.2583	0.0000	\$2.9089
TI	30	Dth (2)	\$3.2251	\$0.0000	0.0000	\$3.2251
TI	30	Dth	\$2.6506	\$0.2583	0.0000	\$2.9089
CNG	31	Dth	\$2.6506	\$0.2583	0.0000	\$2.9089

(1) Supply Demand Billing Units

(2) On-Peak Demand Billing Units



Franchise Surcharges

Original Sheet No. 38

**NATURAL GAS RATES
FRANCHISE FEE SURCHARGES**

FRANCHISE FEE SURCHARGE

The monthly charge for natural gas service as determined from the Company's applicable gas rate schedules, including the Gas Cost (Reconciled), General Rate Schedule Adjustments, and any other applicable adjustments, shall be increased to each customer receiving service within a municipality wherein the Company pays franchise fees, by the appropriate percentage as set forth in the franchise agreement between the Company and the municipality, less any franchise fees included in Company's gas rate schedules.



Demand Side Management

Original Sheet No. 39

**NATURAL GAS RATES
DEMAND SIDE MANAGEMENT**

APPLICABILITY

Demand Side Management (DSM) Surcharge shall be applicable to retail tariff customers taking service under the terms contained in this tariff, except as outlined in specific Gas Rate Sheets.

MONTHLY RATE

In addition to the Monthly Rates and provisions of the applicable rate schedule applied in determining a Customer's gas bill, all monthly bills for Customers receiving service shall have applied the following per-Dth surcharge:

Residential (Rate Schedule – RG)	\$ 0.2204
Commercial and Industrial (Rate Schedules - CG or IG).....	\$ 0.0179

BALANCING ACCOUNT

A balancing account (FERC Account 182.3) shall track DSM program costs and activities for customers. The balancing account will be debited each month to reflect expenditures incurred in the delivery of DSM program activities.

DSM program expenditures will be recovered through DSM Surcharge revenues received on and after January 1, 2016. The DSM Surcharge will appear on customer bills as a separate line item entitled DSM Surcharge. Revenues collected through the DSM Surcharge will recover costs incurred for the delivery of DSM programs to customers and be recorded as a credit to the same balancing account the expenditures are recorded.

Interest Charges

Balancing account balances are subject to simple interest charges to account for over- or under-collections of the DSM Surcharge revenues in relation to DSM program expenditures. Simple interest shall accrue monthly on each end-of-month deferred balance. The monthly interest rate shall be at a rate that is 1/12th of the annual Commission's Authorized Interest Rate as defined in the Commission's Rules.

When the balancing account is in a debit position (the running balance of DSM Surcharge revenues collected including the accumulated interest to date is less than program expenditures posted to a particular balancing account), interest revenue is recorded to FERC Account 419 (Interest and Dividend Income) monthly, with the offsetting debit to the balancing account (resulting in an increase in the receivable balance).

When the balancing account is in a credit position (the running balance of DSM Surcharge revenues collected including the accumulated interest charges to date is greater than the program expenditures posted to a particular balancing account), interest expense is recorded as a debit to FERC Account 421 (Other Interest Expense) and a credit to the balancing account. This will result in a decrease in the receivable balance.



Demand Side Management

Original Sheet No. 39A

**NATURAL GAS RATES
DEMAND SIDE MANAGEMENT - CONTINUED**

DSM REPORTING

A DSM Balancing Account Report will be filed annually, within 90 days after the DSM Tariff Effective Date anniversary. This report will reconcile monthly DSM Surcharge revenues received to the DSM program expenditures (including any interest adjustments) and provide a year-end balance summary.

An Energy Efficiency Status Report will be filed annually, within 120 days after the DSM Tariff Effective Date anniversary, with the Commission. The purpose of these reports will be to summarize program participation, expenditures, and impacts; document adaptive management strategies over the course of the reporting period; and demonstrate the overall cost-effectiveness of specific programs and the overall program portfolio.

In addition, the annual Evaluation, Management and Verification (EM&V) reports, addressing process and impact evaluations, will be filed with the Commission upon completion.

DSM SURCHARGE ADJUSTMENTS

Annual Adjustments

The DSM Balancing Account year-end balance, along with forecasted DSM program expenditures for the following twelve months, will be the basis for proposed adjustment to the DSM Surcharge. In conjunction with the DSM Balancing Account Report filing, annual adjustments will be proposed as necessary to reasonably ensure the balancing account maintains as close to a zero balance on an annual basis, as is reasonably possible. Initially, during the three-year pilot program, an adjustment will be proposed when an overall DSM plan budget deviation of 15% or greater exists due to customer response; and, after the first two years of the pilot program, the balancing account will be included in the 15% deviation.

Margin Recovery

Based on the volumetric savings results of the Commission approved DSM plan, the Company will request Commission approval to collect lost margins. The Margin Recovery is determined by multiplying the calculated deemed Dth savings by the applicable Margin Recovery rates of \$0.5503 per Dth for Residential Customers and \$0.3759 per Dth for Commercial and Industrial Customers. This Adjustment amount is then divided by the forecasted Dth sales for the next year to determine the adjustment rate. This Margin Recovery Adjustment rate is added to the DSM Surcharge for the next year. Any over- or under-recoveries of the Margin Recovery Adjustment will be trued up annually through the Balancing Account. Application for Margin Recovery shall be made with the annual adjustment filing.



Demand Side Management

Original Sheet No. 39B

**NATURAL GAS RATES
DEMAND SIDE MANAGEMENT - CONTINUED**

Other Adjustments

Other adjustments to DSM Surcharge customer collection percentages may be required outside of the annual review and adjustment process to offset changes in forecasted DSM Surcharge revenues as a result of rate case tariff changes, Gas Cost (Reconciled) tariff changes, and other related tariff changes.

Applications for proposed DSM Surcharge adjustments will be filed a minimum of 45 days in advance of the requested effective date.

DSM PROGRAMS

The DSM programs encouraging Residential, Commercial and Industrial Customers receiving service under the RG, CG or IG Rate Schedules to purchase and install energy-efficiency products and appliances are explained in the following section:

- Residential Heating and Cooling Program
- Residential Energy Evaluation Program
- Residential Thermal Envelope Measures Retrofit Program
- Residential New Construction Program
- Commercial and Industrial Prescriptive Program
- Commercial and Industrial Custom Program
- Commercial and Industrial Direct Install Program

Qualifying appliances and/or measures will be eligible for rebates under only one of the above-listed programs. Program participants will be required to provide documentation as determined by the Company to ensure program eligibility requirements are met.



Demand Side Management

Original Sheet No. 39C

**NATURAL GAS RATES
DEMAND SIDE MANAGEMENT - CONTINUED**

Residential Heating and Cooling Program

The Residential Heating and Cooling Program provides a rebate to a Customer with a separately metered residence receiving service under the RG Rate Schedule. A qualifying residence is a separately metered dwelling unit in a structure that has up to and including four separately metered Residential dwelling units.

To receive a rebate, Customers must submit a completed application form and required supporting documentation. The Customer can find more information, including the rebate application for this program, at www.blackhillsenergy.com.

Equipment	Efficiency Requirements	Rebate
	Annual Fuel Utilization Efficiency (AFUE) Uniformed Energy Factor (UEF)	
Furnaces	≥ 92% AFUE	\$250
Furnaces	≥ 94% AFUE	\$325
Furnaces	≥ 96% AFUE	\$400
Boilers	≥ 85% AFUE	\$150
Boilers	≥ 90% AFUE	\$400
Storage Water Heaters	≥ 0.64 UEF	\$75
Storage Water Heaters	≥ 0.80 UEF	\$300
Tankless Water Heaters	≥ 0.87 UEF	\$300
Heating System Tune-Up	n/a	\$50



Demand Side Management

Original Sheet No. 39D

**NATURAL GAS RATES
DEMAND SIDE MANAGEMENT - CONTINUED**

Residential Energy Evaluation Program

The residential energy evaluation can be conducted on homes that are greater than 5 years of age after construction. A participating Customer will receive a customized report recommending home improvements that can be implemented to reduce usage.

The Customer can find out more information about scheduling an in-home energy evaluation or conducting an on-line survey for this program at www.blackhillsenergy.com.

Left Behind Measure

Low Flow Showerhead
Faucet Aerators
Up to 2 LED's



Demand Side Management

Original Sheet No. 39E

**NATURAL GAS RATES
DEMAND SIDE MANAGEMENT - CONTINUED**

Residential Thermal Envelope Measures Retrofit Program

To qualify for this program rebates, the Customer must have an in-home energy evaluation performed by the Company. The Residential Envelope Measures Retrofit Program provides a rebate to a Customer with a separately metered residence receiving service under the RG Rate Schedule. A qualifying residence is a separately metered dwelling unit in a structure that has up to and including four separately metered Residential dwelling units.

To receive a rebate, Customers must submit a completed application form and required supporting documentation. The Customer can find more information, including the rebate application for this program, at www.blackhillsenergy.com.

Measure	Minimum Efficiency Requirements	Rebate
Insulation (ceiling)	R-49*	\$0.50 sq.ft. up to \$750
Insulation (wall)	R-13	\$0.50 sq.ft. up to \$750
Insulation (exterior sheathing)	R-5	\$0.50 sq.ft. up to \$750
Insulation (floor)	R-25	\$0.50 sq.ft. up to \$750
Insulation (foundation)	R-10	\$0.50 sq.ft. up to \$750
Insulation Rim Joist	R-13	\$0.50 sq.ft. up to \$750
Insulation (duct)	R-4	70% of the cost up to \$170
Air Sealing	n/a	70% of the cost up to \$200
Duct Sealing	n/a	70% of the cost up to \$285
ENERGY STAR Windows	U equal to or less than 0.32	\$50 per window assembly
ENERGY STAR Patio Doors	U equal to or less than 0.32	\$50 per patio door assembly

* Must have less than R-40 ceiling insulation at the time of the upgrade.



Demand Side Management

Original Sheet No. 39F

**NATURAL GAS RATES
DEMAND SIDE MANAGEMENT - CONTINUED**

Residential New Construction Program

The Residential New Construction Program offers a rebate to a builder of a separately metered residence receiving service under the RG rate schedule. A qualifying residence is a separately metered dwelling unit in a structure that has up to and including four separately metered residential dwelling units.

To receive a rebate, Customers must submit a completed application form and required supporting documentation. The Customer can find more information, including the rebate application for this program, at www.blackhillsenergy.com.

Performance Tier	Qualification Requirements Home Energy Rating System (HERS)	Natural Gas Efficiency Requirements	Rebate	
			Gas Homes	Gas/Electric Home
Tier 1	HERS ≤ 70	Furnace ≥ 92% AFUE and Water heater ≥ 0.64 UEF	\$1,000	Tier 1
Tier 2	HERS ≤ 65 with ENERGY STAR v.3 certificate		\$3,000	Tier 2



Demand Side Management

Original Sheet No. 39G

**NATURAL GAS RATES
DEMAND SIDE MANAGEMENT – CONTINUED**

Commercial and Industrial Prescriptive Program

The Commercial and Industrial Prescriptive Program offers rebates to a separately metered business unit receiving service under the CG and IG Rate Schedules.

A rebate under the Commercial and Industrial Prescriptive Program is paid directly to a Commercial or Industrial Customer for purchasing and installing a qualifying measure at the qualifying business unit. Qualifying measures and rebates are listed in the Commercial and Industrial Prescriptive Rebate table below. Qualifying measures include those that target cost-effective natural gas savings including retrofits of existing systems as well as first-time installations.

To receive a rebate, customers must submit a completed application form and required supporting documentation. The Customer can find more information, including the rebate application for this program, at www.blackhillsenergy.com.

Measure	Efficiency Requirements	Rebate
Furnace	≥ 92% AFUE	\$250
Furnace	≥ 94% AFUE	\$325
Furnace	≥ 96% AFUE	\$400
Boiler (less than 300,000 Btu/hour)	≥ 85% AFUE	\$150
Boiler (less than 300,000 Btu/hour)	≥ 90% AFUE	\$400
Water Heater (less than 60 gallons)	≥ 0.64 UEF	\$75
Water Heater (less than 60 gallons)	≥ 0.80 UEF	\$300
Setback Thermostat	Self-Installation	Up to \$25
Convection Oven	ENERGY STAR	\$100
Range & Oven	High Efficiency	\$500
Conveyor Oven	High-Efficiency (≥ 23%)	\$500
Fryer	ENERGY STAR	\$500
Broiler	High-Efficiency (≥ 34%)	\$100
Steam Cooker	ENERGY STAR	\$500
Low-flow spray head	Gallons/minute ≤ 1.6	\$5



Demand Side Management

Original Sheet No. 39H

**NATURAL GAS RATES
DEMAND SIDE MANAGEMENT – CONTINUED**

Measure	Size Requirements	Rebate (maximum rebate of 50% of installed cost)
Boiler Reset Controls	Boiler ≤ 300,000 Btu/hour	\$150 per boiler controlled
Boiler Reset Controls	Boiler 300,000 - 1,000,000 Btu/hour	\$250 per boiler controlled
Boiler Reset Controls	Boiler ≥ 1,000,000 Btu/hour	\$500 per boiler controlled
Steam Trap Replacement	Steam system pressure up to 15 psig	\$ 50 per trap
Steam Trap Replacement	Steam system pressure ≥ 15 psig	\$150 per trap
Heating Equipment Tune-up	Furnace ≤ 225,000 Btu/hour	\$100 per unit
Heating Equipment Tune-up	Boiler ≥ 300,000 Btu/hour	\$250 per unit

Commercial and Industrial Custom Program

The Commercial and Industrial Custom Program offers rebates to a separately metered business unit receiving service under the CG and IG Rate Schedules.

A rebate under the Commercial and Industrial Custom Prescriptive Program is paid directly to a Customer for purchasing and installing a qualifying measure at the qualifying business unit.

To qualify for a rebate payment, Customers must submit a project to the Company for review and evaluation prior to installation. If the required Total Resource Cost Benefit-Cost test (TRC B-C) threshold is achieved, the project will be approved for determination of a rebate incentive. Once approved, the Customer would receive a rebate that would ensure a two-year payback or cover one-half of the incremental cost of the measure, whichever is less, once documentation is presented that the project is completed. The Customer can find more information, including the rebate application, for this program at www.blackhillsenergy.com.

Commercial and Industrial Direct Install Program

The Commercial and Industrial Direct Install Program offers rebates to a separately metered business unit receiving service under the CG and IG Rate schedules.

A rebate under the Commercial and Industrial Direct Install Program is paid directly to a pre-qualified Company contractor for purchasing and installing a qualifying measure at the qualifying business unit.

To qualify for a rebate payment the Customer has two options; 1) pay cash and receive a 5% discount on project costs, 2) finance the project with the contractor at 0% interest for 1 year. Customers will receive an on-site analysis to identify energy-efficiency opportunities, and then the contractor will directly install those measures for the Customer.



Demand Side Management

Original Sheet No. 39I

**NATURAL GAS RATES
DEMAND SIDE MANAGEMENT – CONTINUED**

RULES

Service under this Schedule is subject to the Rules and Regulations contained in the tariff of which this Schedule is part, and to those prescribed by regulatory authorities.